



MIMI LIVE AGENCY REGISTRATION

Registration Link:

https://h5.vshowapi.com/guild/agency_invite/register?inviter_id=14405856&c=mimi

Note: Those users who are already using Poppo Live and want to use Mimi Live should use the same credentials.



+91 70653 84660

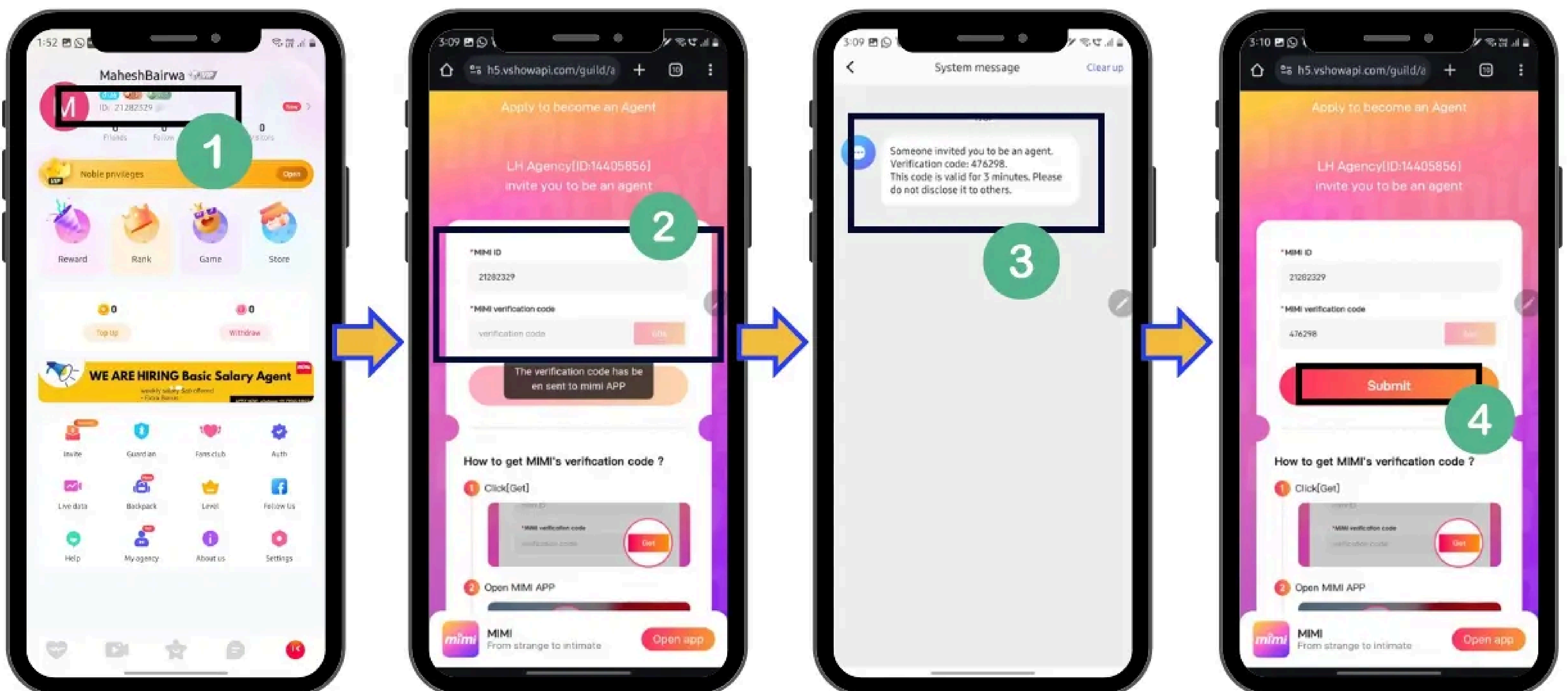


BECOME MIMI LIVE AGENT

Follow the below steps to become a Mimi Live Agency:

- Download the **Mimi Live app** and sign in.
- Copy your ID from your Mimi Live profile.
- Click on the **Agency Registration Link**, enter your Mimi ID & Click 'Get', and find the Verification Code in the system messages
- Enter the verification Code and click 'Submit'.

REGISTER AGENCY LINK





MIMI LIVE AGENCY COMMISSION STRUCTURE

Agent Commission Rate:

- The Mimi agent's commission ratio depends on the total income of all the hosts and invited agents in the last 30 days.

The Mimi Live agency commission consists of two parts:

- Host: Agent's corresponding commission rate * Host's performance
- Invite agent: (Agency Commission Rate – Commission rate for invite agents) * Invite agent earnings

Note:

- **The commission will be issued to the points account in real time.**
- **The agency earnings include the host's income from video and voice calls, text chats, and gifts, excluding task and ranking rewards.**
- **If the agent was inactive for more than or equal to 7 days or was banned (including temporarily banned), the agent's commission will not be counted.**



AGENT INVITE COMMISSION ON MIMI LIVE

Agent Commission Rate			
Level	Points(Recent 30 days)	LIVE/PARTY Commission Rate	Call/Chat Commission Rate
D	0 ~ 2 million	4%	4%
C	2 ~ 10 million	8%	8%
B	10 ~ 50 million	12%	12%
A	50 ~ 150 million	16%	16%
S	150 million+	20%	20%

EXAMPLE:

Mimi Agent's commission rate(reference from agent commission picture):

Host income under agent C is 60M,

Host income under agent F is 110M

Agent C commission rate= The host income of 'C+F'

So Agent C is LEVEL S($60M + 110M = 170M$), and the commission rate is: 20%

Host income under agent B is 30M,

Host income under agent D is 20M

Host income under agent E is 20M

Agent B commission rate= The host income of ' B+D+E':

So Agent B is LEVEL A($30M + 20M + 20M = 70M$), and the commission rate is: 16%



Agent A commission rate= The host income of ‘
A+B+C+D+E+F’:

So Agent A is LEVEL

S(3M+30M+60M+20M+20M+110M=243M), and the
commission rate is: 20%

Invite agent rewards for Agent A:

1. Invite Agent C can get= (Agent A commission rate –
Agent C commission rate) * host income under Agent
C

So it is (20%- 20%) * 60M = 0*

2. Invite Agent B can get= (Agent A commission rate –
Agent B commission rate) * host income under Agent B

So it is (20%- 16%) * 30M = 1.2M*

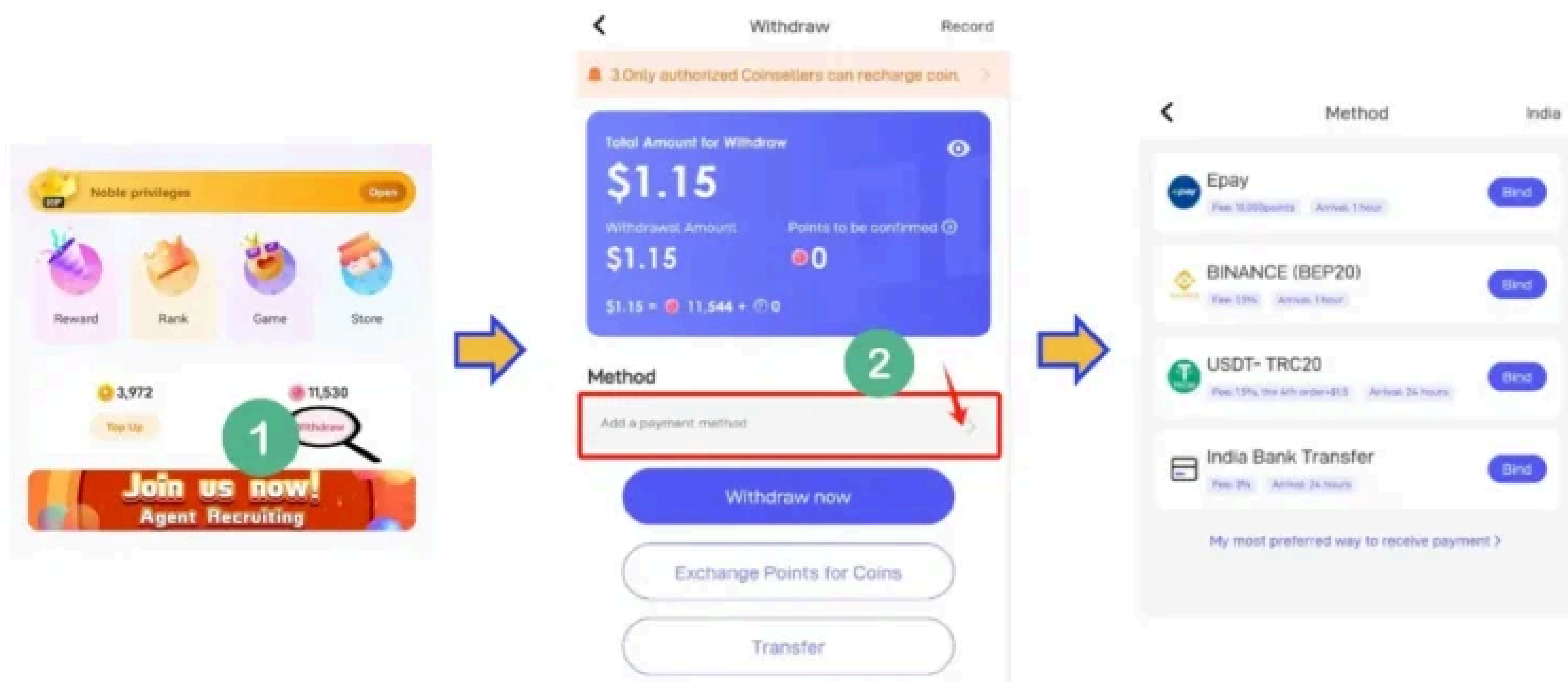
Note:

**When your commission rate is higher than your
invite agent’s, you will get the rewards for every
gift income from the hosts under your invite agent.
If your invite agent’s commission rate is 20%, you
will not get any rewards from him.**



HOW TO WITHDRAW FROM MIMI LIVE

- Click “Withdraw” on the Withdraw Page.
- Add a payment method that we offer and bind it
- After binding the payment, Click on “Withdraw now”



Mimi Payment Withdrawal Rules:

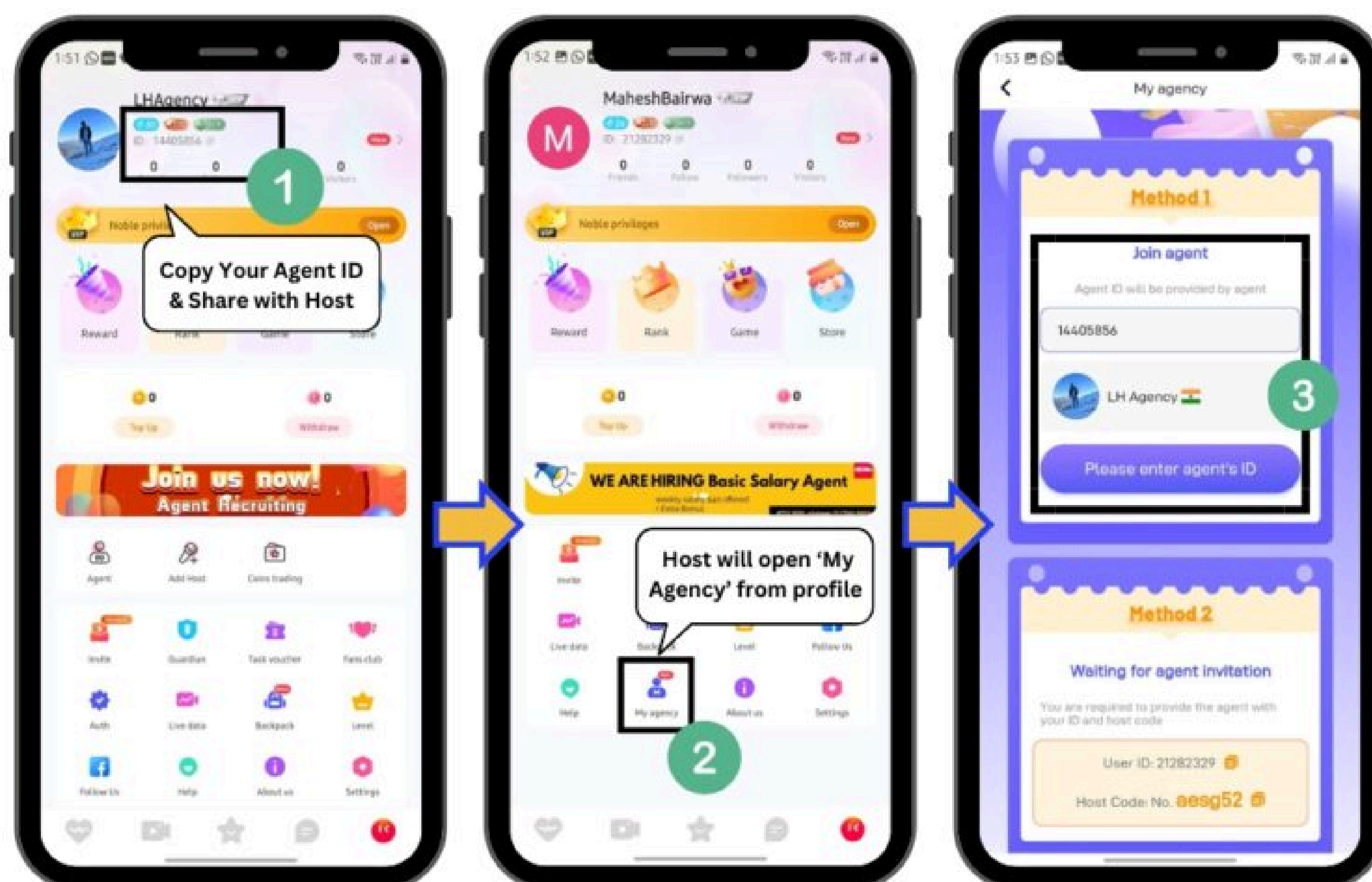
- The conversion rate: 10000 Points = 86 Rupees.
- The minimum withdrawal amount is \$10 and has to be a multiple of 10. Any remaining amount will be carried out for the next week’s cycle.
- The service charges will be applied to the withdrawal amount and it varies due to the difference in withdrawal rules and currency rates across different payment methods.



HOW TO ADD HOSTS

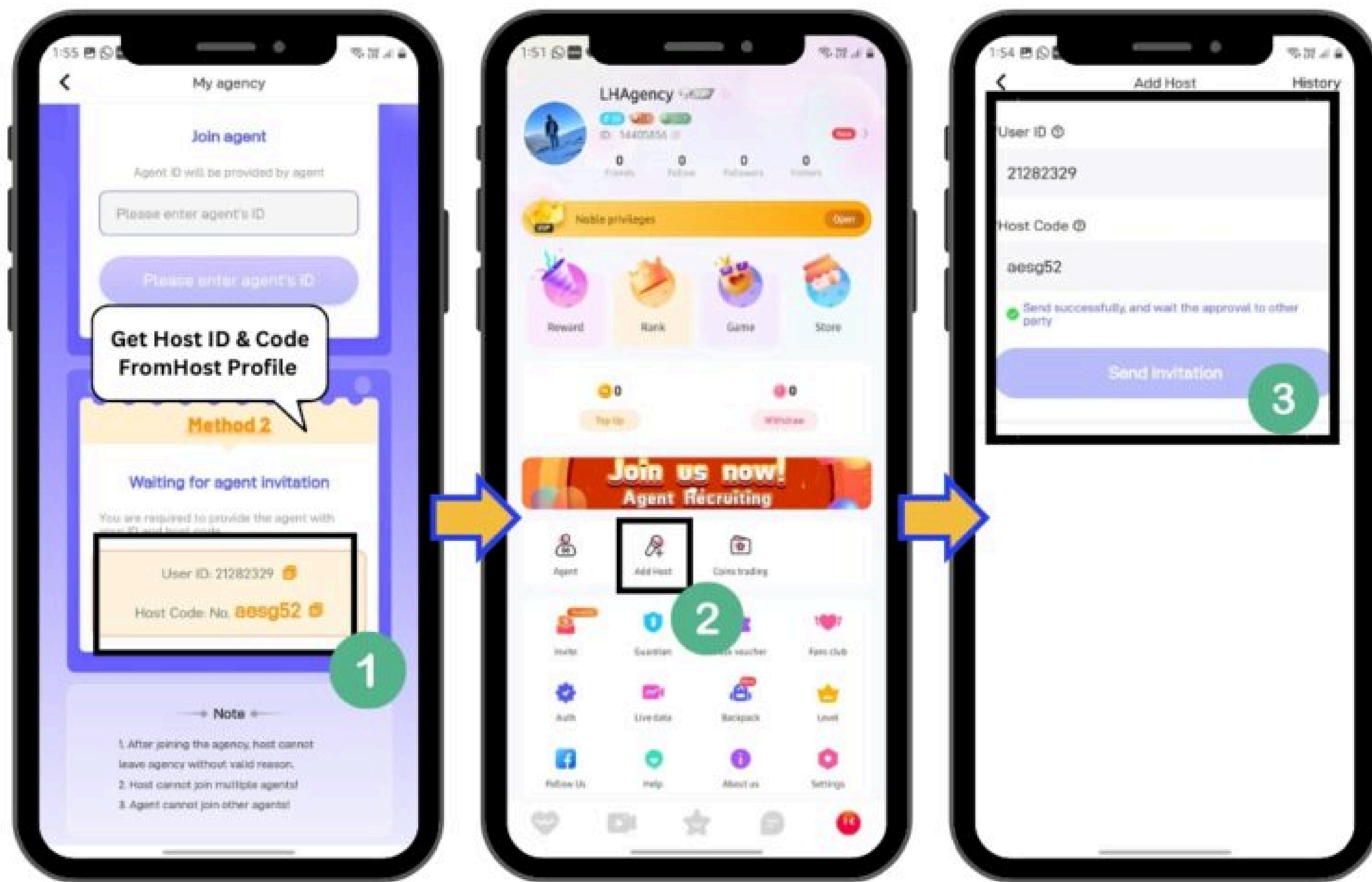
Method 1: Add host using Agent ID

- Host will Download MiMi Live & Create Profile
- Host needs to select 'My Agent' option from profile
- Host will enter your Agent ID & Submit.



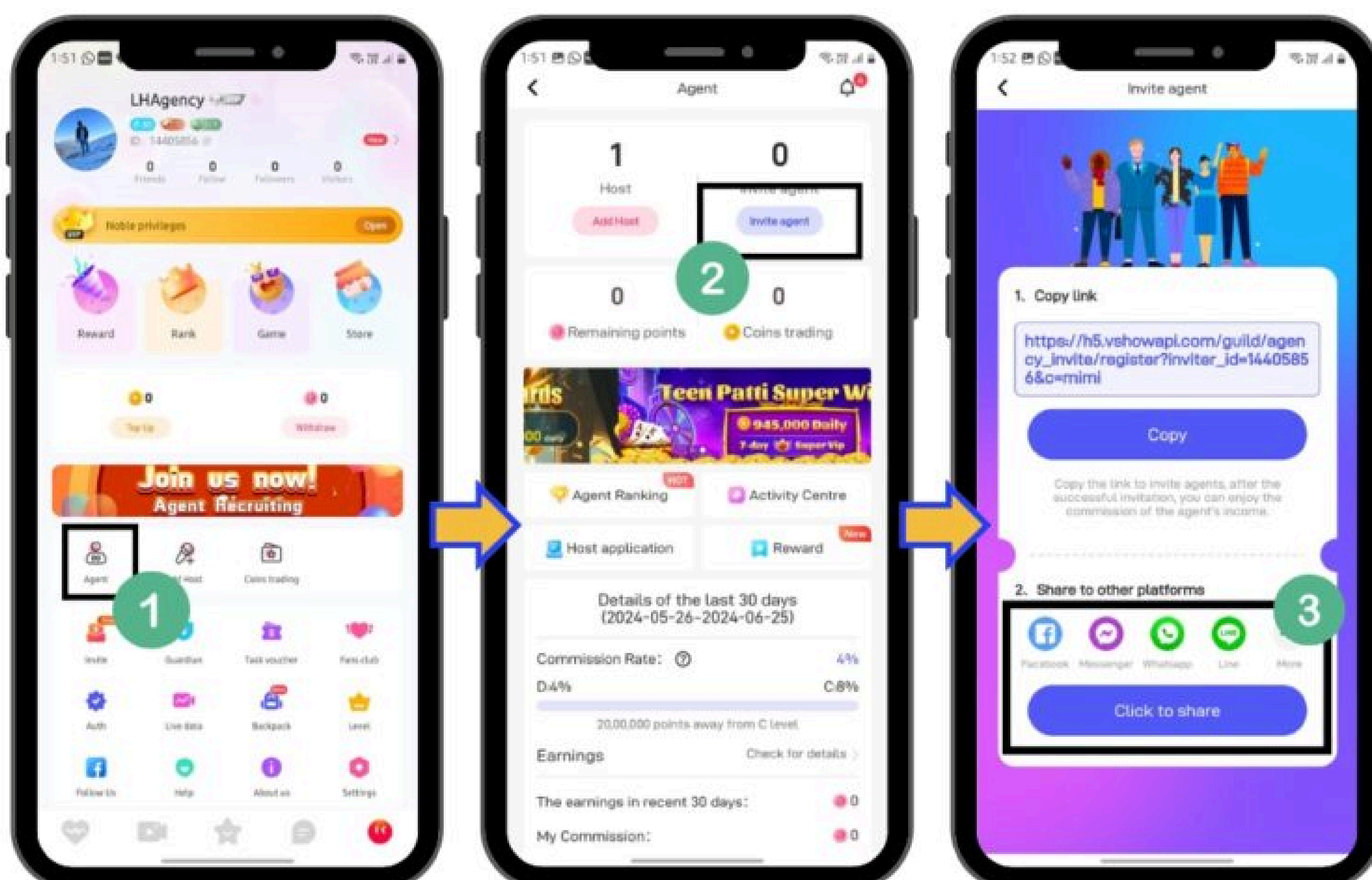
Method 2: Add host using Host ID & Code

- Host will Download the MiMi Live App & Create a Profile.
- Host must open the 'My Agent' to find ID & Code.
- Host will provide Mimi ID & Host Code with the agent.
- Agent will Select 'Add Host' option from agency profile.
- Agent needs to enter Host ID & Code to send agency invite.
- Host will confirm the agent invitation received in-app messages.



HOW TO INVITE SUB-AGENTS

- Open 'Agent' option from your profile
- Select 'Invite Agent' button
- Copy your 'Invite code' & share it with your sub-agent.
- Invited agent need to verify their MIMI ID using your invite link.





INVITE FRIENDS AND EARN - UP TO \$74

Overview of the Invite Rewards:

- Invite friends to go live, and earn \$6.
- Invite friends to earn \$8.
- Invite friends to recharge, and earn \$60.

How to Invite Friends:

- Click the “Invite” icon on the profile on the page, then click “Invite Now” to start earning.
- Click to share the invite link with your friends, and start to earn now!





MIMI LIVE AGENCY RULES

General:

- No recruitment within the platform, if an agent has been reported by hosts or users for spamming the “join agency” invitation, a permanent ban of ID will be executed.
- Marketing of third-party platforms is prohibited.
- The agent should maintain a healthy professional relationship with hosts and provide the required support for their performance improvement.
- The agent must pass face authentication to operate the Mimi Live agency.
- Disobeying any rules will lead to strict action.

Mimi Live Agency Dismissal Rule:

- Agents who have been registered for more than two weeks must meet either of the following conditions:
- The combined broadcast time of all hosts ≥ 10 hours/week
- The coin-selling amount must be $\geq \$1000$ /week (referring only to the amount directly sold to users)



Disqualified agents:

- All hosts will leave the agent automatically.
- All invite agent's relationships will be transferred to the superior agent.

NOTE: If the agency does not meet the above rules for the first week, will be warned and disqualified in the second week.

**HAVE ANY QUERY?
FEEL FREE TO ASK QUESTIONS**



support@lhtalentagency



www.mimiliveagent.com



+91 70653 84660